

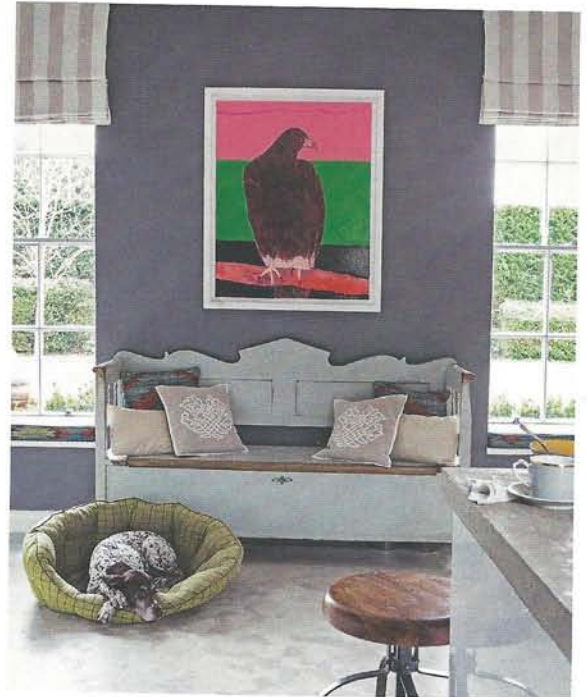


◀ **INSIDE OUT**

Although this building is new, the reclaimed timber ceiling helps to ground it in its setting, as does the weathered work table, used as a console. Note how the flagstones flow outside, linking the house with the surrounding countryside.

▽ **BIRD'S EYE VIEW**

In this kitchen, Henriette von Stockhausen of VSP Interiors, vspinteriors.com, has mixed antique pieces, such as the Hungarian bench, with new elements, including polished concrete and a vibrant portrait of a hawk by Rory Nugent, rorynugent.co.uk.



“Steel-framed windows are ideal for maximising light in a country home. Steel is very strong, allowing for elegant frames with slim profiles, which can be used with large expanses of glass to let daylight flood in.”

STUART JUDGE, managing director, Crittall, crittall-windows.co.uk.

STRETCHING OUT

The unusual U shape of this sofa makes clever use of the narrow space. The chaise ends invite lounging and provide extra seating for guests, while the low profile doesn't obstruct the windows. Horizontal panelling offers a modern alternative to the traditional vertical style and makes the room appear wider.





“In a country home where outdoor pursuits and dogs are part of the lifestyle, a boot room plays an important role. A sink is practical for cleaning mucky apparel and pets, as is storage for their bedding and towels. If you have room, a hidden washing machine is a useful asset, too.”

PHILIPPA THORP, interior designer, thorp.co.uk.

◁ **BOOT CAMP**

This orderly room by Thorp, thorp.co.uk, features ample shelving and pegs, as well as a central bench that doubles as boot storage. The tongue-and-groove panelling adds character and is a practical choice, as it is easy to wipe down, while a large mirror has been positioned opposite the window to bounce light back into the room.

▽ **MIXING IT UP**

A neutral backdrop has been enlivened with colourful fabrics by Jane Churchill, janechurchill.com. The sofa, in *Lambada in Denim*, and chair in *Jive in Red*, both £38m, take their cue from the bold hues of the curtains in *Pasillo in Red/Copper*, £97m. The patterned rug and cushions continue the relaxed, laid-back tone.



◁ **A NEW LEAF**

A pair of Chinese panels, found at a flea market in Paris, and a planter filled with flowers help to bring the garden right into the sitting room of the Norfolk home of designer Birdie Fortescue, birdiefortescue.co.uk. Note how she has hung the blind high above the French windows to make them appear taller.

△ **NATTY DRESSER**

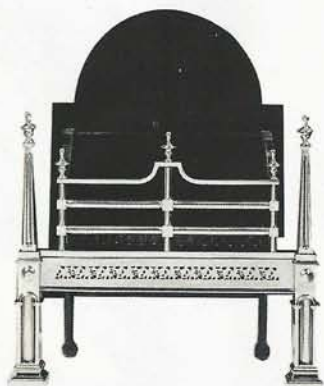
Beautifully decorative Willow wallpaper, £330 a roll, by Marthe Armitage at HamiltonWeston.com, gives this kitchen an easy lived-in feel, enhanced by rustic antiques including a scrubbed pine table, glazed dresser and 1950s pendant light. Interior design by Henriette von Stockhausen, vspinteriors.com.



PHOTOGRAPH PAUL RAESIDE/TIMEINCUKCONTENT.COM



SHOPPING FIRE BASKETS



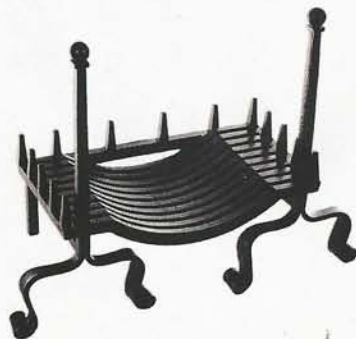
1 | Statement style.
Tobin fire grate in steel,
 H104xW84.5xD43cm, **£4,560**,
 Jamb, jamb.co.uk.



2 | Simply perfect.
Riva grate in steel, H18.5x
 W58xD27cm, **£154**, Stovax,
stovax.com.



3 | Cool contemporary.
Amhurst fire basket in steel,
 H33xW45.5xD30cm, **£450**,
 Chesneys, chesneys.co.uk.



4 | Black magic.
Peyton fire dogs with small grate
 in iron, H65xW76xD44cm, **£311**,
 Jim Lawrence, jim-lawrence.co.uk.



△ **FADED GRANDEUR**

This traditional fireplace with its fire basket and brass fender works beautifully in this muted scheme by VSP Interiors, vspinteriors.com. The fabrics and wallpaper by Robert Kime, robertkime.com, are a fitting choice for this artful update on English country-house style.

◁ **FAIR COPPER** These bespoke metal radiators were designed for this top-floor bedroom by Cubic Studios, cubicstudios.com. The semi-industrial look is matched by the scaffold pipe bed frame, with the vintage leather armchair and buttoned ottoman lending a softer edge.