

DORSET

October 2012

dorset.greatbritishlife.co.uk

*Life without
Limits...*

World-class engineering
at Dorset Orthopaedic

Wimborne's
Festival for Foodies

**Awesome
Autumn recipes**
from Dorset chefs

**Sherborne's
Beautiful
Secret**



**Electric
bike tours
in West
Dorset**

Witchampton's
thriving community shop



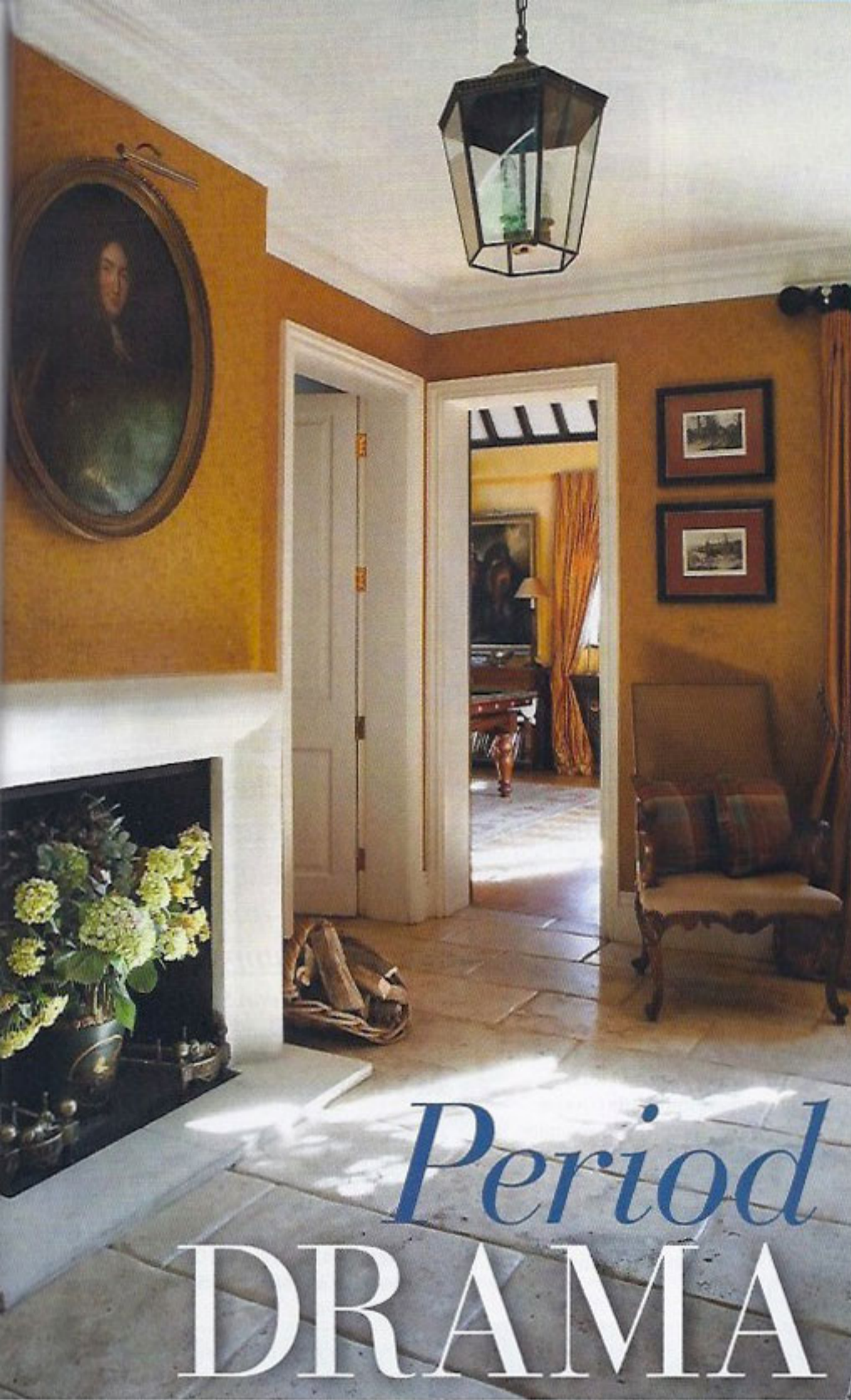
Ratty's return!
Water voles released
at Moors Valley Park



**Relish, chutney,
jam and jelly – a
preserving passion
in Blandford**

£2.75





Above: We also often panel small rooms to add some more character to a rather small or plain room



The heritage look can be achieved without history and a home of Downton Abbey proportions. **Henriette von Stockhausen** from VSP Interiors tells you how

One of the most important pieces of advice I have been given regarding period interiors is to firstly consider the room or house as a skeleton. The windows, doors, architraves, picture rails and any other period or architectural details are the bones of the body, and you should give them as much importance as possible. Highlight period details if you are lucky enough to have any, but if not, add some corncicing or change the scale of the plain architrave to make an entrance or window more important. Secondly, look at the

proportions, views and vistas and decide what for, how and by whom the room is used. This will help decide pieces of furniture, curtain styles and accessories you need to select to make this room work and to bring out or create the period character. All of this can be done on a grand scale or in the smallest flat. Thirdly, it is crucial to create a focal point, whether this is a central fireplace or a decorative piece. As long as it has visual impact, quality and price are sometimes irrelevant. Size really does matter, even in a small room. A big piece is all you need for



impact, so if in doubt, always go bigger than your instincts would tell you! This is true for a mirror over the fireplace, a big painting or a large vase filled with flowers.

Proportions, perspective, symmetry and different textures are important to period interiors. Distressed French antiques, some relaxed linen upholstery or a collection of precious pieces displayed in a beautiful way will all equate to a special period look.

Lighting is very important but I recommend to consult a specialist (Sally Storey at johncullenlighting.co.uk in London is very good) for advice as this really can make all the difference in bringing out architectural and period features. They can create a dramatic look for the night where just the paintings and the cornices are lit, or a daytime look where you would not even notice the light is on but immediately notice the highlighted item, for example the fireplace. All of this does not have to cost a fortune – sometimes just one or two LED spots or some old fashioned picture lights can do the trick.

Finally, add some rugs for warmth and period charm, some antique paintings (check out your local auction house for some fantastic original bargains) and you can never go wrong with one beautiful piece of French antique and lots and lots of period accessories! Try decorativecollective.com for ideas.

The right wall colour is very important in creating an authentic period look. Chalkiness and quality pigments are worth looking for. I can recommend for the period look rose-of-jericho.demon.co.uk which have fantastic lime washes and



“For those special touches you can't buy off the shelf, I make lamps out of vases, garden urns and other items such as balustrades etc, and top them with handmade silk lampshades.”

Henriette von Stockhausen

are based near Evershot, Farrow and Ball is also Dorset-based, paint Library paintlibrary.co.uk and Little Greene, littlegreene.com, can provide accurate historic colour palettes. I also love, and use a lot of, Ralph Lauren wallpapers. Their quality is amazing, they are easy to hang and the company has biggest choice of historic patterns available anywhere. ■



At VSP Interiors we love:

Fabrics and porcelain from Holly Lasseter, Weymouth, hollylasseterdesigns.co.uk

Paintings by Julian Bailey, Dorchester – julianbailey.co.uk – and going to see the artists at the Art Stable in Child Oakford, theartstable.co.uk. Tom Hammick is my personal favourite.

Dorset Reclamation in Bere Regis, dorsetreclamation.co.uk. It is a great place to find a period door or fireplace. Simon Wharton in Somerset is also very good for fireplaces, whartonantiques.com.

The little treasure cave De Dannans Antique Centre on London Road in Dorchester for antique finds, 01305 250 066.

Trevor Toms Kitchen in Sherborne, trevortoms.co.uk. They often make our specially designed kitchens and made to measure furniture. The husband and wife team are especially accommodating and take the view that anything is possible.

Dorset Kitchens in Beaminster – dorsetkitchens.co.uk – very good value for money!